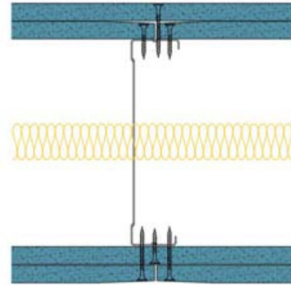


146-B-59(25) - SPEEDLINE System Data Sheet - Version V1 (24-10-23)

SPEEDLINE 146mm 'C' Stud Partition @600mm
Ctrs, with 2x BG Gyproc 12.5mm SoundBloc each
side, 25mm APR



System Performance Breakdown

Fire Resistance:

BS476 Part 22:1987:

Test Ref & Date or Applied Ref & Report:

Max Height:

Thickness:

Duty Grade: BS 5234: Part 2:1992:

Sound Insulation:

60/60 Minutes (Integrity/Insulation).

BTC 17580F - BRE Report P102396-1011A

Refer to Speedline Specification Clause

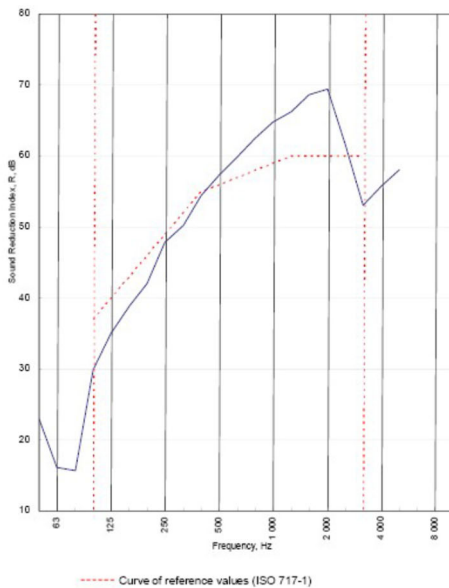
198 mm. (At Base Track, Excluding Finishes)

Severe - Annexes A-F

56 R_w dB, Date Tested or Assessed Against - 70-B-59(25)

Test Code:
H17450AA
Test Date:
29/06/2011

Freq. Hz	R dB
50	22.9
63	16.1
80	15.6
100	29.9
125	35.0
160	38.8
200	42.0
250	47.8
315	50.2
400	54.5
500	57.3
630	59.9
800	62.5
1000	64.8
1250	66.3
1600	68.7
2000	69.4
2500	61.6
3150	53.1
4000	55.8
5000	58.1
6300	
8000	
10000	



Rating according to BS EN ISO 717-1:1997
Evaluation based on laboratory measurement results obtained by an engineering method.

R_w (C;Ctr) = 56 (-3;-9) dB
Max dev. 7.1 dB at 100 Hz

$C_{50-1100}$ = -10 dB	$C_{50-5000}$ = -9 dB	$C_{100-5000}$ = -2 dB
$C_{125-1100}$ = -22 dB	$C_{125-5000}$ = -22 dB	$C_{125-100-5000}$ = -9 dB

TESTED AT ONE OF THE UKAS ACCREDITED LABORATORIES BELOW

B.T.C
(H-Ref on Graph)



B.R.E



AIRO



S.R.L



Customer: Metsec plc Hespsec Division

BTC 17450A: Page 9 of 11



SPEEDLINE Drywall Systems, Adsetts House, 16 Europa View, Sheffield Business Park, Sheffield, S9 1XH.

Tel: 0114 231 8030.

Email: enquiries@speedlinedrywall.co.uk

(As per the requirements set out in ISO/IEC 17025:2017 regarding test data the results stated have been carried out by voestalpine Metsec plc as part of the contract to supply Speedline Metal Sections to SIG Plc)